

yocto
PROJECT

command
reference

yocto
PROJECT

command
reference

yocto
PROJECT

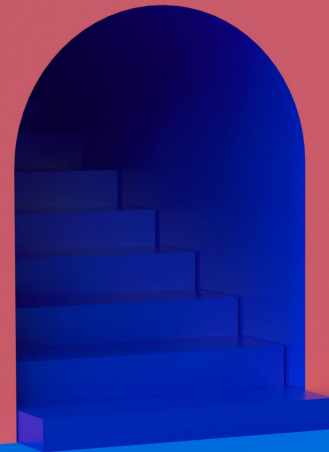
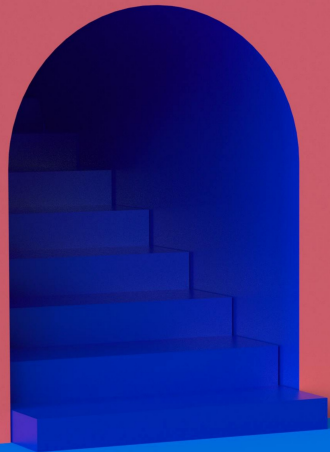
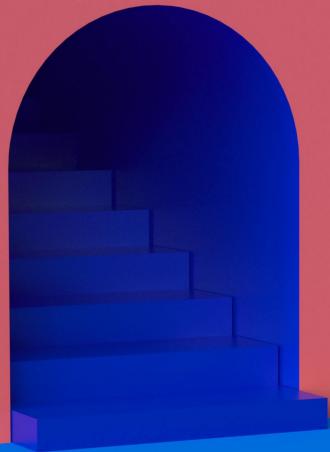
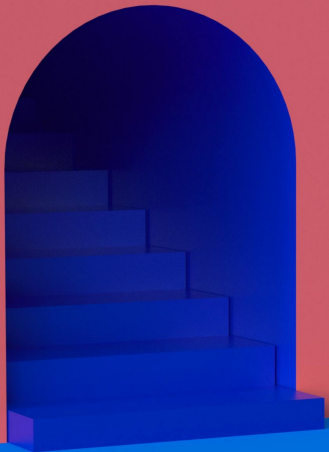
command
reference

yocto
PROJECT

command
reference

yocto
PROJECT

command
reference



 root
commit

 root
commit

 root
commit

 root
commit

 root
commit



Source build environment
source oe-init-build-env

Build image or recipe
bitbake core-image-minimal
bitbake dropbear

Build all possible recipes
bitbake world

Keep going after errors
bitbake -k core-image-base

Force rebuilding recipe from source
bitbake -c cleansstate lighttpd

Show all enabled recipes
bitbake -s

Show all recipes and versions
bitbake-layers show-recipes "u-boot**"

Get the value of a variable
bitbake-getvar -r recipe SRC_URI

Find source (.bb) file for recipe
devtool find-recipe busybox

Check applied appends
bitbake-layers show-append

Create a new layer
bitbake-layers create-layer /path/to/layer

Add layer to your configuration
bitbake-layers add-layer /path/to/layer

Show layer paths and priorities
bitbake-layers show-layers

Execute specific task of a recipe
bitbake -c do_fetch linux-yocto

Run kernel configuration interface
bitbake -c menuconfig linux-yocto

Export this configuration for a recipe
bitbake -c savedefconfig linux-yocto

Find package providing file
oe-pkgdata-util find-path /usr/bin/perl

Find recipe producing a list of packages
oe-pkgdata-util lookup-recipe perl

Check if recipe needs upgrading
devtool check-upgrade-status flac

Learn more at
<https://rootcommit.com/training/yocto/>



Source build environment
source oe-init-build-env

Build image or recipe
bitbake core-image-minimal
bitbake dropbear

Build all possible recipes
bitbake world

Keep going after errors
bitbake -k core-image-base

Force rebuilding recipe from source
bitbake -c cleansstate lighttpd

Show all enabled recipes
bitbake -s

Show all recipes and versions
bitbake-layers show-recipes "u-boot**"

Get the value of a variable
bitbake-getvar -r recipe SRC_URI

Find source (.bb) file for recipe
devtool find-recipe busybox

Check applied appends
bitbake-layers show-append

Create a new layer
bitbake-layers create-layer /path/to/layer

Add layer to your configuration
bitbake-layers add-layer /path/to/layer

Show layer paths and priorities
bitbake-layers show-layers

Execute specific task of a recipe
bitbake -c do_fetch linux-yocto

Run kernel configuration interface
bitbake -c menuconfig linux-yocto

Export this configuration for a recipe
bitbake -c savedefconfig linux-yocto

Find package providing file
oe-pkgdata-util find-path /usr/bin/perl

Find recipe producing a list of packages
oe-pkgdata-util lookup-recipe perl

Check if recipe needs upgrading
devtool check-upgrade-status flac

Learn more at
<https://rootcommit.com/training/yocto/>



Source build environment
source oe-init-build-env

Build image or recipe
bitbake core-image-minimal
bitbake dropbear

Build all possible recipes
bitbake world

Keep going after errors
bitbake -k core-image-base

Force rebuilding recipe from source
bitbake -c cleansstate lighttpd

Show all enabled recipes
bitbake -s

Show all recipes and versions
bitbake-layers show-recipes "u-boot**"

Get the value of a variable
bitbake-getvar -r recipe SRC_URI

Find source (.bb) file for recipe
devtool find-recipe busybox

Check applied appends
bitbake-layers show-append

Create a new layer
bitbake-layers create-layer /path/to/layer

Add layer to your configuration
bitbake-layers add-layer /path/to/layer

Show layer paths and priorities
bitbake-layers show-layers

Execute specific task of a recipe
bitbake -c do_fetch linux-yocto

Run kernel configuration interface
bitbake -c menuconfig linux-yocto

Export this configuration for a recipe
bitbake -c savedefconfig linux-yocto

Find package providing file
oe-pkgdata-util find-path /usr/bin/perl

Find recipe producing a list of packages
oe-pkgdata-util lookup-recipe perl

Check if recipe needs upgrading
devtool check-upgrade-status flac

Learn more at
<https://rootcommit.com/training/yocto/>



Source build environment
source oe-init-build-env

Build image or recipe
bitbake core-image-minimal
bitbake dropbear

Build all possible recipes
bitbake world

Keep going after errors
bitbake -k core-image-base

Force rebuilding recipe from source
bitbake -c cleansstate lighttpd

Show all enabled recipes
bitbake -s

Show all recipes and versions
bitbake-layers show-recipes "u-boot**"

Get the value of a variable
bitbake-getvar -r recipe SRC_URI

Find source (.bb) file for recipe
devtool find-recipe busybox

Check applied appends
bitbake-layers show-append

Create a new layer
bitbake-layers create-layer /path/to/layer

Add layer to your configuration
bitbake-layers add-layer /path/to/layer

Show layer paths and priorities
bitbake-layers show-layers

Execute specific task of a recipe
bitbake -c do_fetch linux-yocto

Run kernel configuration interface
bitbake -c menuconfig linux-yocto

Export this configuration for a recipe
bitbake -c savedefconfig linux-yocto

Find package providing file
oe-pkgdata-util find-path /usr/bin/perl

Find recipe producing a list of packages
oe-pkgdata-util lookup-recipe perl

Check if recipe needs upgrading
devtool check-upgrade-status flac

Learn more at
<https://rootcommit.com/training/yocto/>



Source build environment
source oe-init-build-env

Build image or recipe
bitbake core-image-minimal
bitbake dropbear

Build all possible recipes
bitbake world

Keep going after errors
bitbake -k core-image-base

Force rebuilding recipe from source
bitbake -c cleansstate lighttpd

Show all enabled recipes
bitbake -s

Show all recipes and versions
bitbake-layers show-recipes "u-boot**"

Get the value of a variable
bitbake-getvar -r recipe SRC_URI

Find source (.bb) file for recipe
devtool find-recipe busybox

Check applied appends
bitbake-layers show-append

Create a new layer
bitbake-layers create-layer /path/to/layer

Add layer to your configuration
bitbake-layers add-layer /path/to/layer

Show layer paths and priorities
bitbake-layers show-layers

Execute specific task of a recipe
bitbake -c do_fetch linux-yocto

Run kernel configuration interface
bitbake -c menuconfig linux-yocto

Export this configuration for a recipe
bitbake -c savedefconfig linux-yocto

Find package providing file
oe-pkgdata-util find-path /usr/bin/perl

Find recipe producing a list of packages
oe-pkgdata-util lookup-recipe perl

Check if recipe needs upgrading
devtool check-upgrade-status flac

Learn more at
<https://rootcommit.com/training/yocto/>